

FOR LEASE



262 East Pender St.

Retail Opportunity | Vancouver, B.C.

FOR LEASE



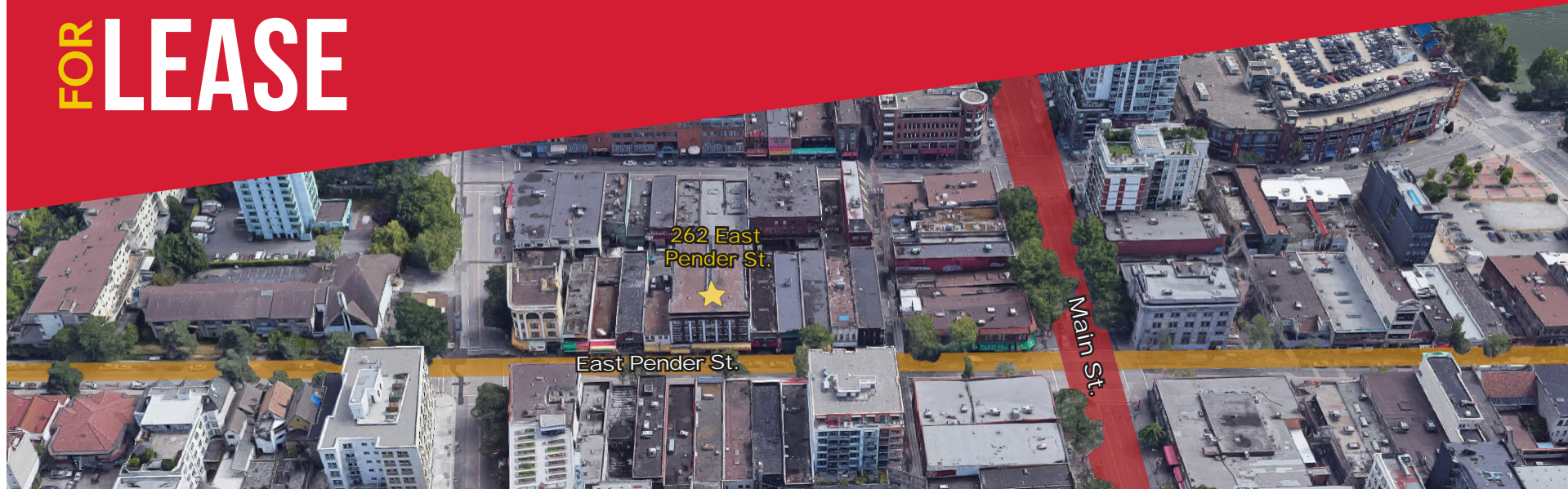
DANIEL SHIH

(604) 699-2376

dshih@prospero.ca



FOR LEASE



LOCATION

Located on East Pender in Chinatown, just 1 kilometre East of Downtown Vancouver. This property has direct access to major bus routes and the Stadium skytrain station is within close walking distance.

Chinatown has undergone major development with numerous mixed-used commercial and residential buildings being built or completed. In particular, East Pender is home to many new and established eateries, bars and boutique-style shops which has increased the foot traffic in the area.

ZONING

HA-1, which includes a variety of permitted uses including cultural & recreational, institutional, office, retail & service-related businesses.

TENANTS

May Wah Hotel, travel agency, cookware store and musical instruments store.

 PROSPERO

FOR LEASE



262 EAST PENDER ST.

TOTAL AREA	MONTHLY GROSS RENT:	AVAILABILITY
10,768 SF	\$7,000.00 + GST	Immediately

RENTABLE AREA	LOCATION
2,318 SF	Ground Floor
8,450 SF	Basement

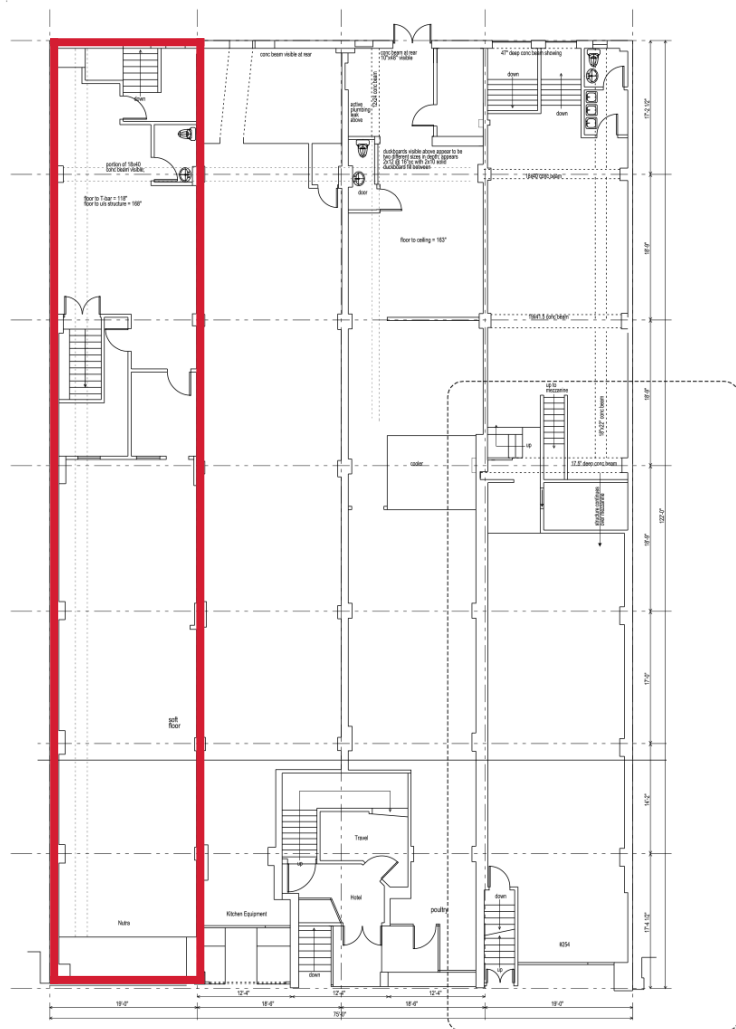
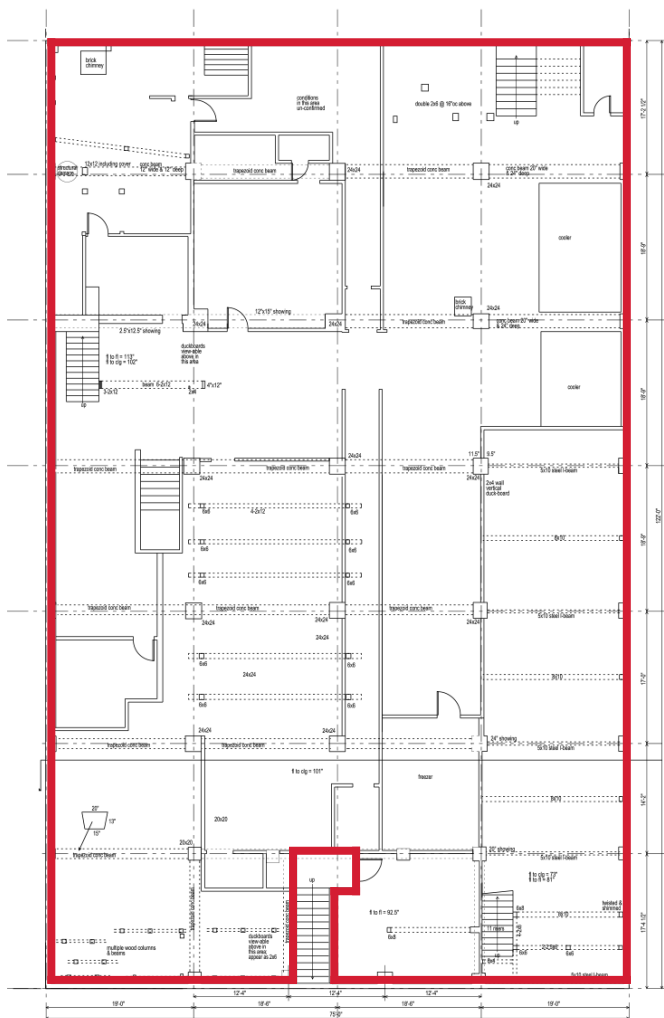
Please Note: Area is subject to remeasurement.
Any Cannabis-related use will be respectfully declined.



 PROSPERO

SITE PLAN

262 EAST PENDER ST.



FOR LEASE



254 EAST PENDER ST.

RENTABLE AREA	LOCATION	AVAILABILITY
2,189 SF	Ground Floor	Immediately
Monthly Gross Rent: \$3,500.00 + GST		
<i>Please Note: Area is subject to remeasurement. Any cannabis-related use will be respectfully declined.</i>		



 PROSPERO